

# Status of NextGen Hyak

# Deployment Timeline

- Initially targeted October delivery
- Delays associated with staffing levels
- Revised for December delivery

# Revised Timeline

- December 3.....Delivery.....Success!
- December 14.....Power On...Success!
- Today OmniPath config only large item remaining
- February 6.....Charter Member Access Begins
- March 6.....General Availability

# Post GA

- Updating documentation
- Fleshing out all software tools
- Scrubbed scratch storage availability
- Refined protocols for running on IKT and MOX

# MOX.hyak Charter Members

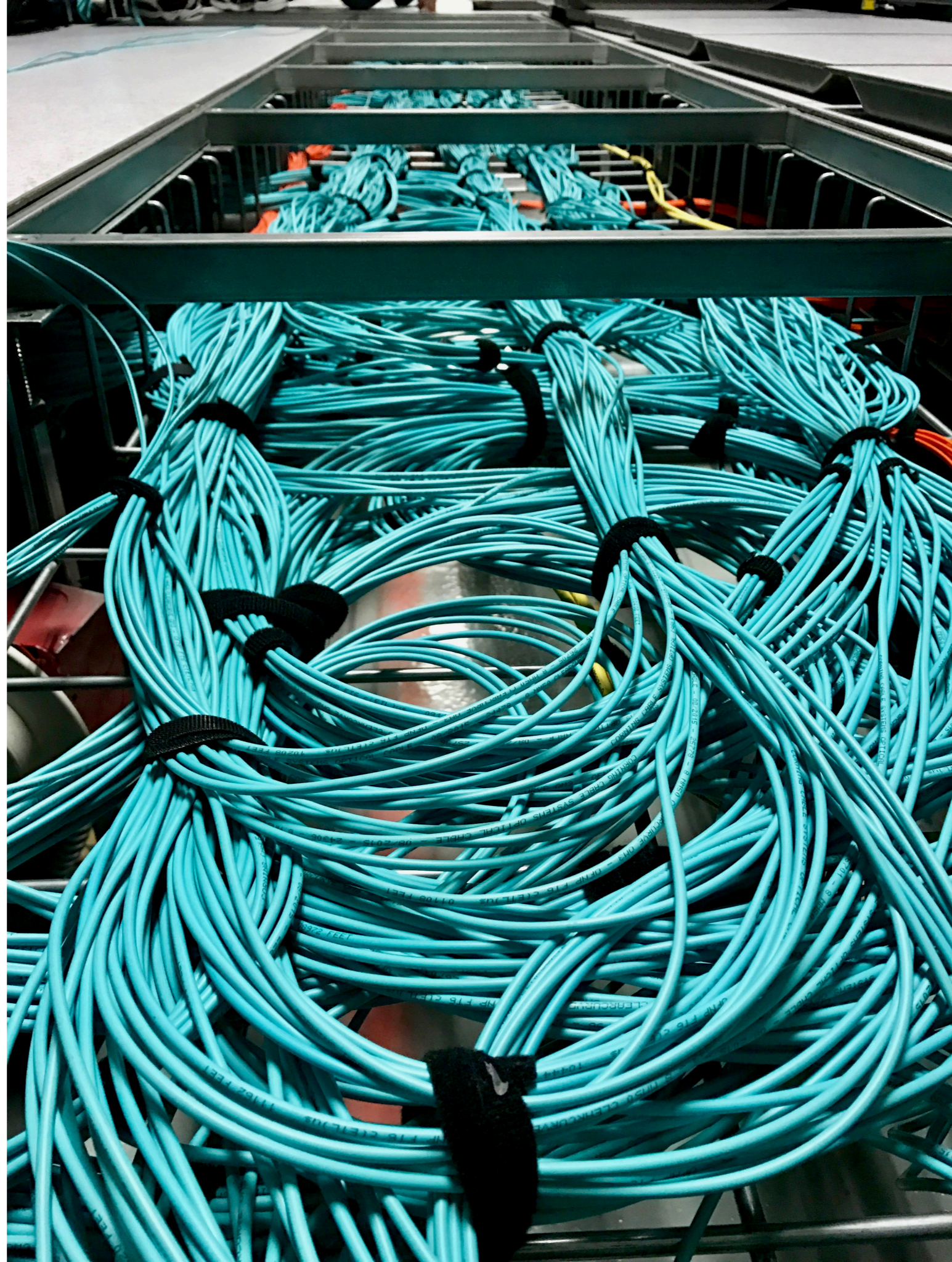
Customer	Sponsor	Node Type (GB)			TOTAL	Notes
		128	256	512		
Chemistry	A&S		18		<b>18</b>	Departmental
ChemE	CoE		13		<b>13</b>	MRI
Chemistry	A&S		37		<b>37</b>	MRI
Physics	A&S		65		<b>65</b>	Nuclear physics
HPCC	STF	40			<b>40</b>	HPC Club - STF
<b>TOTAL</b>		<b>40</b>	<b>133</b>	<b>0</b>	<b>173</b>	

# MOX.hyak FIRST EXPANSION

# Nodes	PI	Department	Certainty
28	ferrante	astro & aero engineering	order placed
2	aliseda	mecahnical engineering	order placed
1	bulgac	nuclear physics	order placed
12	reschke	UW-IT	certain
1	easton	college of the environment	certain
15	ackerman	JISAO	high
8	thompson	oceanography	high
120	baker	HHMI	medium
1	mecheer	mechanical engineering	medium
36	herman	JISAO	low
<b>224</b>			

Phase	#	$\Sigma\#$	%	$\Sigma\%$	# Remaining	% Remaining
Charter	173	173	40%	40%	259	60%
First Expansion	224	397	52%	92%	35	8%
Total Available	432		1			







# Overview of Hyak MOU

# Biggest Changes

- Now governs **ALL HYAK**: IKT.hyak + MOX.hyak
- Establishes a **CORE FACILITY** which sponsors join
- Sponsors pay to support “**RACKS**” of 50 nodes
- Payment for # of racks full or partially occupied due July 1 of each Fiscal year (we’re behind this year)
- Rate increase from \$500/slot/year to **\$800/slot/year**
- Effect of rate changes varies

# Biggest Upgrades

- 10 x increase in network bandwidth (100Gbs)
- 2 x reduction in network latency ( $< 2\mu\text{s}$ )
- 2 x increase in standard RAM (128GB)
- 1.7 x increase in standard node throughput
- 5 x increase in standard scratch quota (500GB/node)

# Other Big Changes

- Scheduler change from Moab/Torque to **Slurm**
- **$\geq$  200TB “scrubbed” scratch at no cost**
- Node-local persistent storage no longer supported
- Jobs now run on HW  $\geq$  user purchase instead of serial # match
- **“Instant On”** provisioning for small & medium orders

# Calculating Your Cost

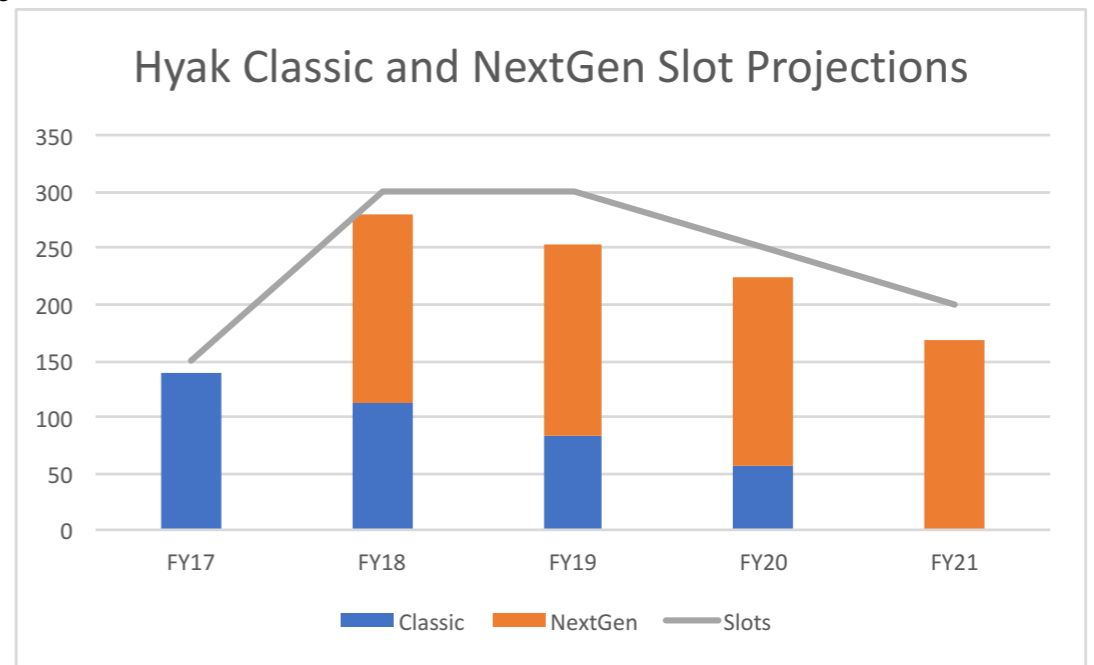
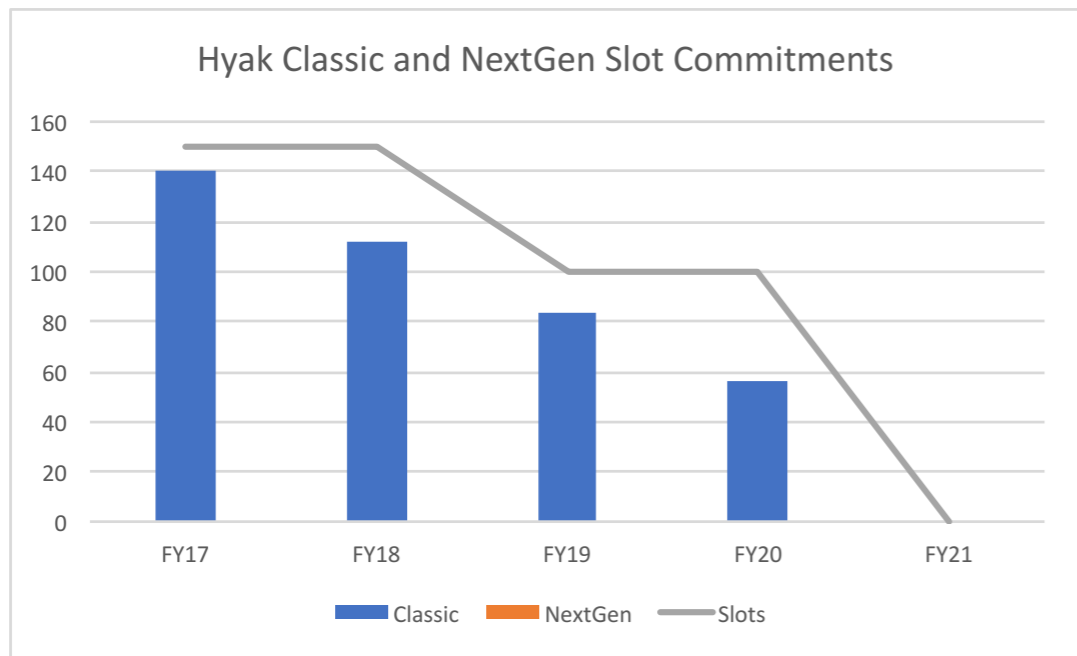
**HHMI**

	Current Commitment Plot Data				
	FY17	FY18	FY19	FY20	FY21
Classic	140	112	84	56	0
NextGen	0	0	0	0	0
TOTAL	140	112	84	56	0
Slots	150	150	100	100	0
\$\$	\$120,000	\$120,000	\$80,000	\$80,000	\$0

	Projected Commitment Plot Data				
	FY17	FY18	FY19	FY20	FY21
Classic	140	112	84	56	0
NextGen	0	168	168	168	168
TOTAL	140	280	252	224	168
Slots	150	300	300	250	200
\$\$	\$120,000	\$240,000	\$240,000	\$200,000	\$160,000

\$400,000  
\$80,000

\$960,000  
\$192,000



# Nodes	Sponsorship
140	\$120,000

Enter the number of nodes you plan to operate in the GREEN cell  
The total, single-year sponsorship cost appears in the ORANGE cell

# Status of Sponsorship

- College of Engineering                      near complete
- College of the Environment                near complete
- HHMI / Baker                                    underway
- College of Arts & Sciences                yet to meet
- UW Bothell                                        yet to meet
- Department of Biochemistry               yet to meet